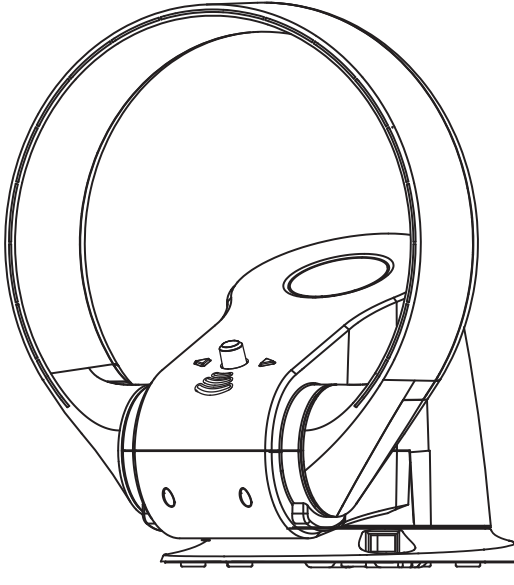


Bladeless fan heater
Instruction Manual



FWT-35H

Thank you for purchasing our bladeless fan heater. We'll provide you with quality products and service.
To ensure you are satisfied with the product and properly clean and maintain it, please read the instruction manual carefully before use. Also, please take good care of this manual for future reference.

Content	
1. Electric safety and maintenance	3
2. Specifications	4
3. Operating guidance	5
4. Remote control instruction	6
5. The receiving signal range of remote control	7
6. Cleaning	8
7. Troubleshooting guide	9

■ Electrical safety and maintenance

**WARNING**
To avoid fire, electric shock, personal injury, be sure to comply with the following requirements.

1. This heater is hot when in use and for a short period after use. To avoid burns, do not let bare skin touch hot surfaces. When moving the heater hold it by the base, not the air loop amplifier.
2. Keep combustible materials, such as furniture, pillows, bedding, papers, clothes and curtains, at least 0.9m (3 feet) from the front of the heater and keep them away from the sides and rear when the heater is plugged in.
3. Children, the elderly and people with disabilities or lacking experience should be under care and guidance of a responsible person when using this product. Children should be under supervision to ensure that they will not play with the fan as a toy.
4. Please use a separate outlet in accordance with the bladeless fan heater current/voltage. Don't use more than one electrical appliance at the same time on the same outlet.
5. Don't move the bladeless fan heater until you unplug it from the outlet.
6. Don't unplug by pulling on cord. You should unplug and grasp the plug, not the cord.
7. Don't operate the bladeless fan heater with a damaged cord or plug. Please ask a service agent to replace or repair the cord if cord is damaged.
8. Don't stretch the cord or place the cord under strain. Keep the cord away from heat sources.
9. Don't run the cord under carpeting; don't cover the cord with throw rugs, runners or similar coverings. Arrange cord away from traffic areas to avoid tripping over the cord.
10. Turn off all controls before unplugging. Remove the plug from the socket when not in use for long periods of time. To avoid a tripping hazard, safely coil the cord.
11. Don't put any object into the inlet grille. Don't block the opening. Keep free of dust, lint, hair and anything that may reduce airflow as this may cause an electric shock or fire, or damage the heater.
12. A heater has hot parts inside. Do not use it in areas where petrol, paint, or flammable liquids are used. The fan should be away from any heat source and non-corrosive gas surroundings. It should be placed on a level surface. Allow for 150mm space around the fan to ensure good ventilation.

13. Don't use the fan outdoors or on wet surfaces. Do not use in bathroom, laundry area and similar indoor locations. Never locate the heater where it may fall into a bath or other water container. Do not use or store where it may get wet or in the immediate surroundings of a bath, a shower, or a swimming pool.
14. Don't immerse the fan, power cord or plug into the water or other liquids. Use of extension cords isn't recommended except after testing by a qualified person.
15. Don't use in conjunction with or directly next to an air freshener or similar products.
16. Don't use any cleaning agent or lubricants on this fan. Unplug before cleaning, carrying and performing any maintenance.
17. Do not use on soft surfaces, such as a bed, where openings may become blocked.
18. In order to avoid overheating and fire hazard, do not cover the heater.
19. The heater should be positioned so the airflow is directed away from any walls or room corners.

IMPORTANT SAFETY FEATURES

For your safety this heater is fitted with automatic cut-out switches that operate if the heater tips over or overheats. If the switches operate, unplug the heater and allow it to cool.

Before restarting the heater check and clear any blockages and ensure the heater is on a solid level surface.

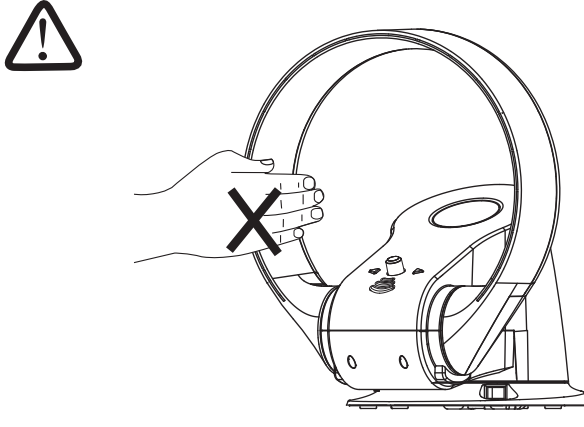
■ Specifications

The design is new and innovative. Which is with light, fashionable, safe features. The bladeless fan heater can rotate 90° and loop can be adjust in 120°

Technical parameters		
Model no.	FWT-35H	
Rated voltage/frequency	220V-240V~ /50Hz	110V-120V~ /60Hz
Rated current	5.5A	11.5A
Input power	1100W	1200W
Packing size	343X318X362	
Net weight	2.7kg	

(Above parameters for reference only, subject to the product nameplate)

4. Caution: hot when in use



This heater is hot when in use and for a short period after use. Do not let bare skin touch hot surfaces. If children are present, consider positioning the heater out of their reach.

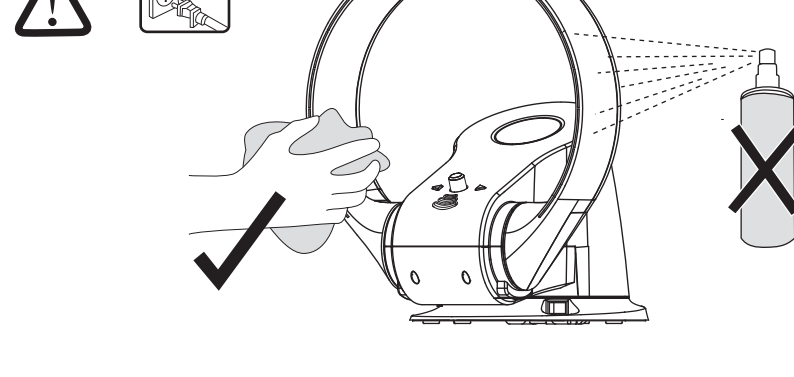
■ Troubleshooting guide

Problem	Possible cause	Suggested solution
Power indicator light on, but fan does not work	The voltage is too low	Stop the fan and don't restart until the voltage is normal
Power indicator does not light	No electricity	1. Check if outlet working 2. Consult an electrician 3. Check the fan if it's on the level surface, anti-tilt switch underneath the chassis is on right position or not 4. Check the power switch is on or not
Airflow is slow	Inlet or outlet is blocked	Clean the blockages
Power connection, but no heating	The temperature reach the preset temperature. (room temp is over 32°)	Wait the bladeless fan heater cool down or room temperature is reduced

■ Cleaning

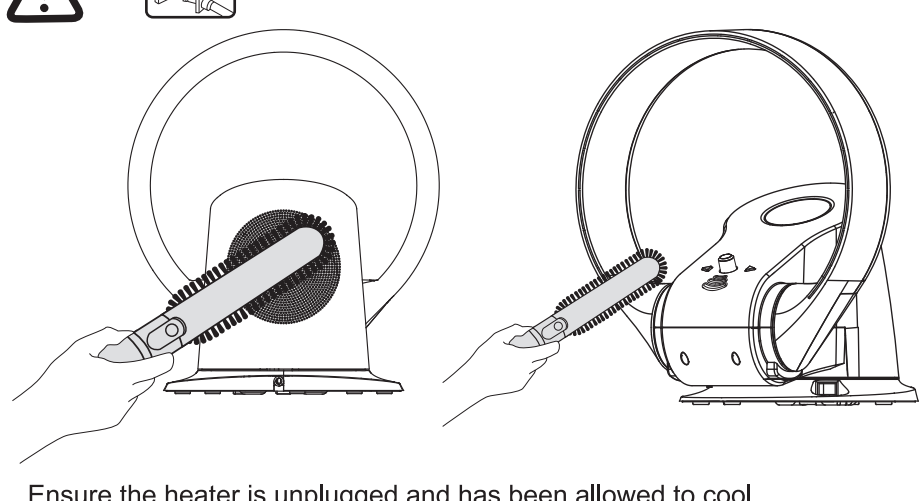
Please unplug the bladeless fan heater from the outlet before cleaning.

1. Cleaning loop



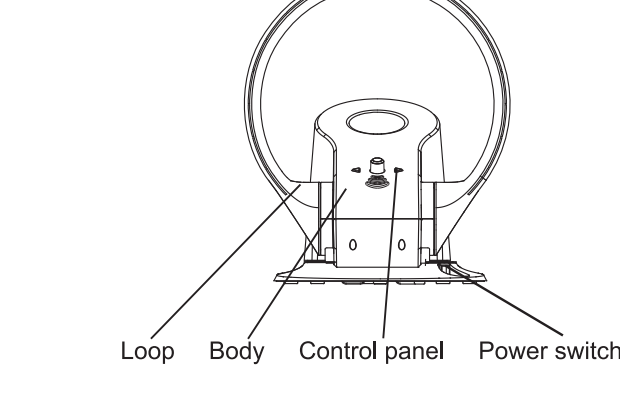
To clean, wipe with a dry or damp cloth. Do not use detergents or polishes to clean the fan.

2. Cleaning blockage

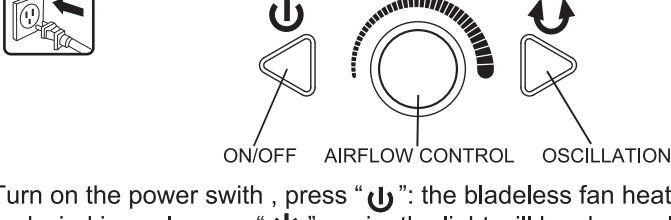


Ensure the heater is unplugged and has been allowed to cool. Look for blockages in the air inlet holes and in the small aperture inside the air loop amplifier. Use a soft brush to remove debris.

■ Operating guidance

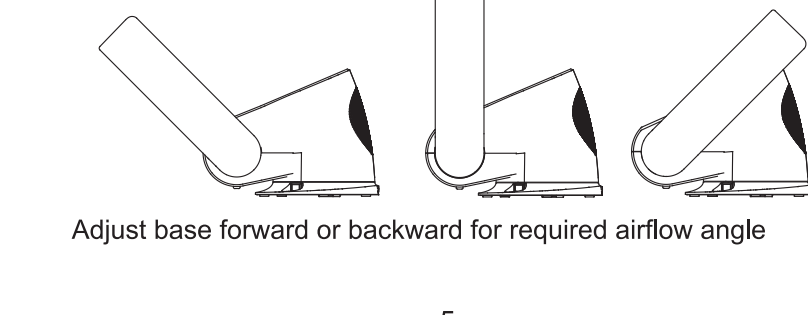


1. Control panel



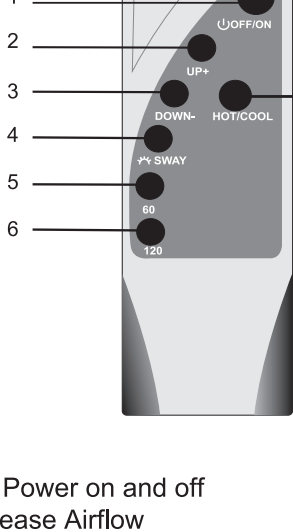
Turn on the power switch, press "U"; the bladeless fan heater start to work and wind is cool, press "U" again; the light will be changed to red and wind is hot, press "U" three times; the bladeless fan heater will stop working

2. Tilt function



Adjust base forward or backward for required airflow angle

■ Remote control

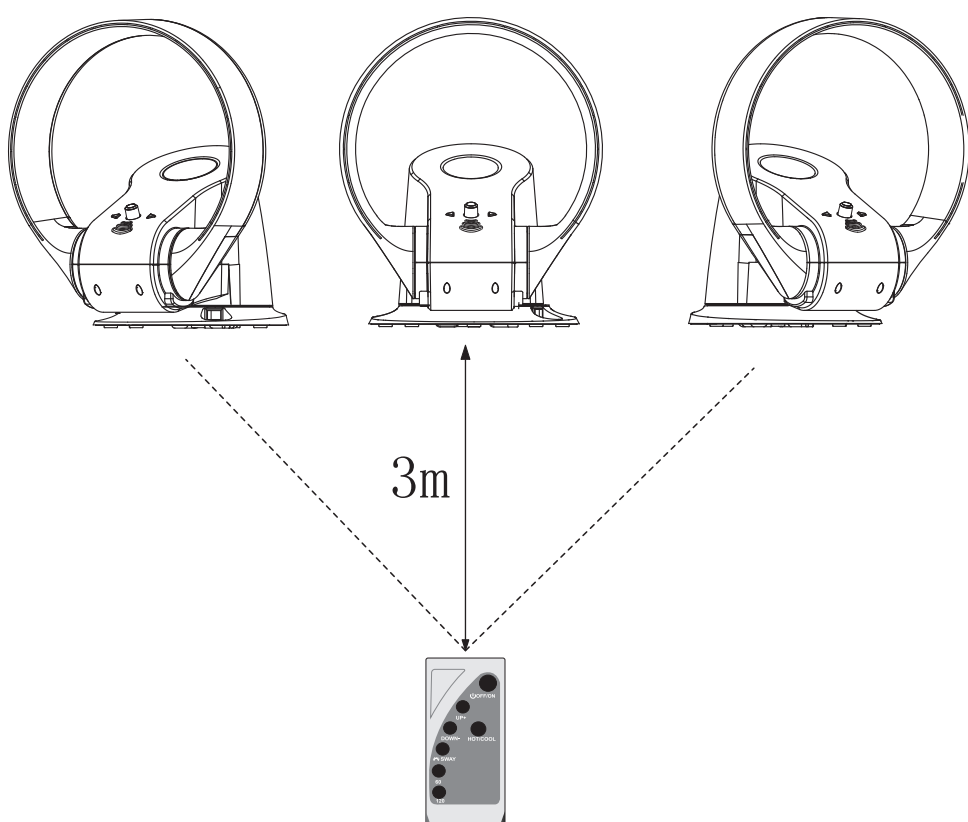


1. "OFF/ON", Power on and off
2. "UP+", Increase Airflow
3. "DOWN-", Decrease Airflow
4. "SWAY", The fan will swing
5. "60", 60 minute timer. The fan will stop working after 60 min. Press again to cancel timer.
6. "120", 120 minute timer. The fan will stop working after 120 min. Press again to cancel timer.
7. Press "HOT/COOL" enter into hot wind condition. Press "HOT/COOL" again to cancel the heating condition and change to cool wind.

***Beep means the remote control is working when you press it.

■ The receiving signal range of remote control

- A: The fan swinging toward left around 20 degree B: The fan is aimed at the remote control C: The fan is swinging toward right around 20 degrees



Optimal effect can be reached if using the remote control between the range of A from C. We suggest that the remote control be aimed at the receiver at the front of fan.